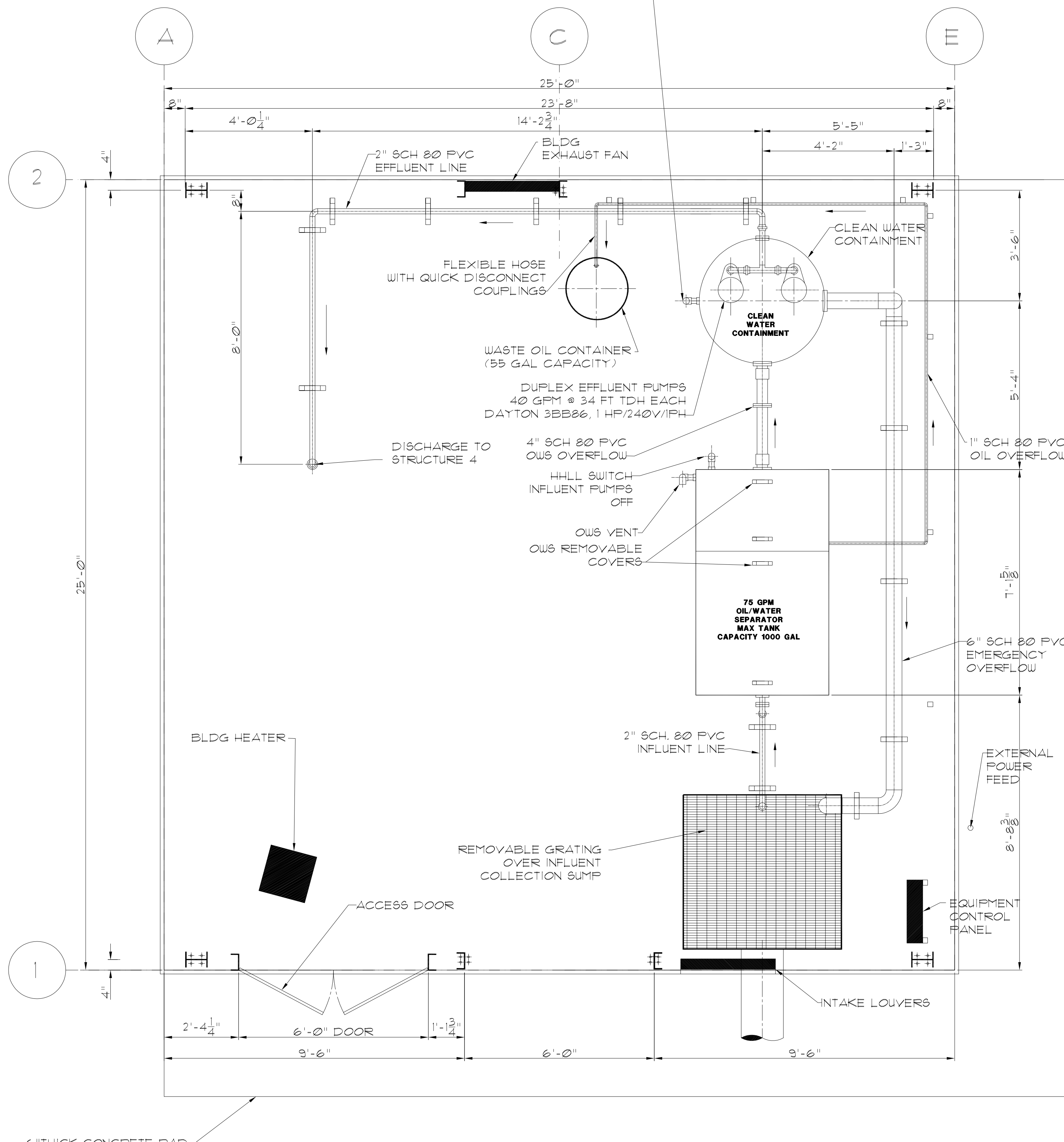
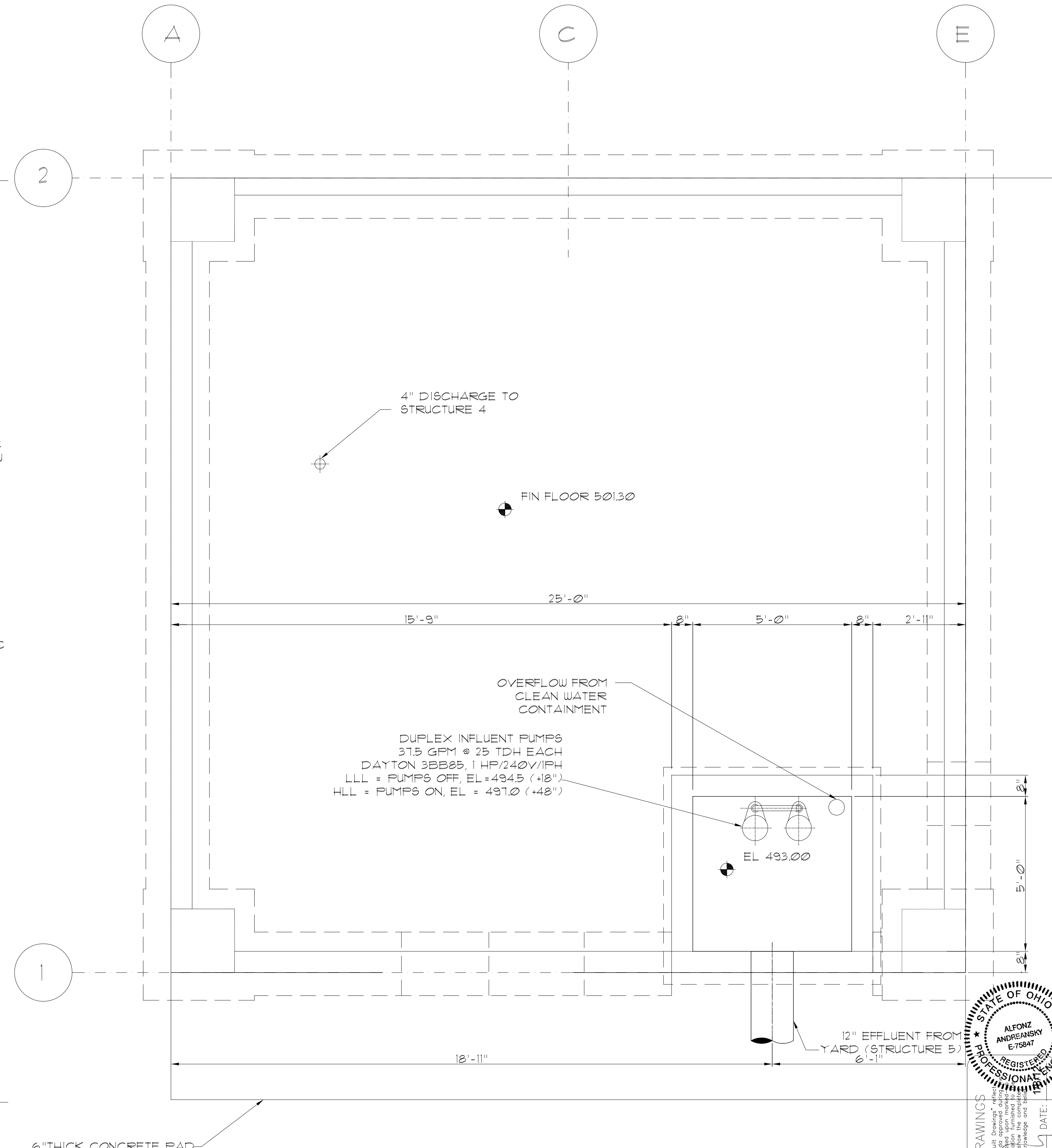


LLL = EFFLUENT PUMPS OFF, EL=502.8 (+18")
 HLL = EFFLUENT PUMPS ON, EL=504.8 (+42")
 HLLL = HIGH LEVEL ALARM, SYSTEM OFF, EL = 505.55 (+51")



EQUIPMENT LAYOUT (FINISHED FLOOR)

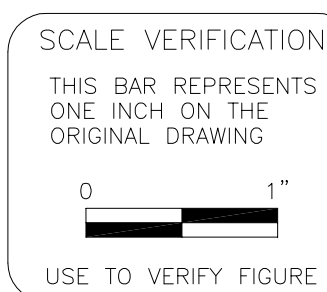
SCALE = 1/2"=1'-0"



EQUIPMENT LAYOUT (BELOW GRATING)

SCALE = 1/2"=1'-0"

LAST REVISION: 01/08/12
 LAST PLOTTED: 01/08/12
 DRAWING SCALE: 1/2"=1'
 PLOT SCALE: 1=1



REVISION	DATE	DESCRIPTION	BY	APPROVED
1	9/14/11	BLDG ARR. REVISIONS	A.A.	
2	12/29/11	AS BUILT REVISIONS	A.A.	

ENGINEER OF RECORD:
 AL ANDREANSKY, P.E.
 OHIO REG. #75847

CAD FILE: 110222401M SCALE: 1/2"=1'-0"
 DRAWN BY: A.A. DATE: 03-19-11
 CHECKED BY: DATE:
 APPROVED BY: DATE:

AL ANDREANSKY, P.E.
 P.O. BOX 456
 PALM HARBOR, FLORIDA 34682-0456
 PHONE: (727) 460-8612, FAX: (727) 789-9565

TREATMENT BUILDING LAYOUT
 2149 WESTERN AVENUE
 CINCINNATI, OHIO 45214

PROJECT No. 11022401.001
 SHEET M1 of 1

AS-BUILT DRAWINGS
 I hereby certify that these "As-Built Drawings" reflect the actual construction of the project as shown on the drawings. I am a duly Licensed Professional Engineer in the State of Ohio.
 ALFONZ ANDREANSKY
 E-75847
 REGISTERED PROFESSIONAL ENGINEER
 ENGINEER: DATE:



CSX INTERMODAL TERMINALS, INC.
 TERMINAL DEVELOPMENT GROUP
 JACKSONVILLE, FLORIDA

CINCINNATI TERMINAL, CSX INTERMODAL, JACKSONVILLE, FLORIDA