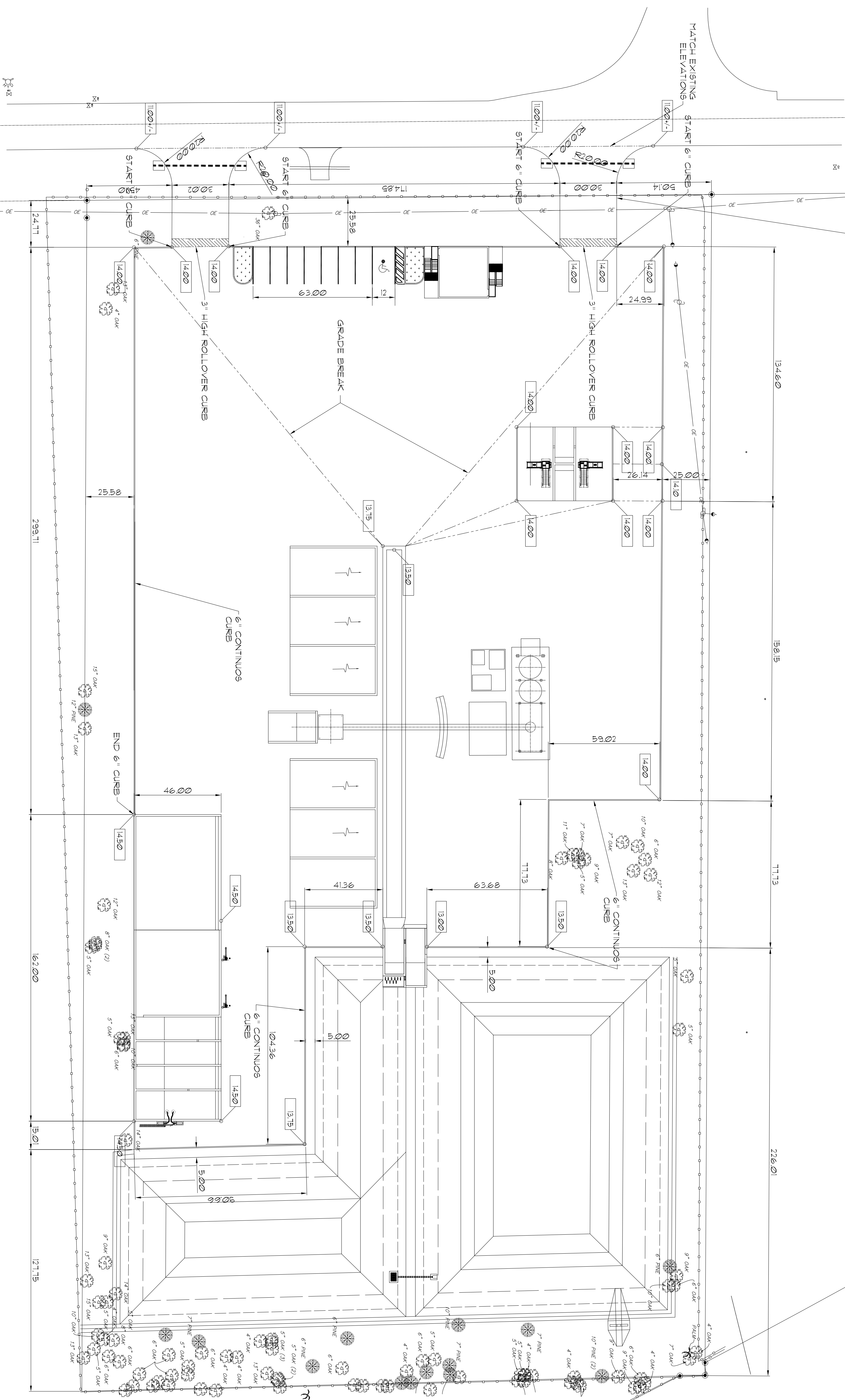


SEE DRAWINGS BY OTHERS FOR DRIVEWAY DETAILS



LAST REVISION: 07/05/11
 LAST PLOTTED: 07/05/11
 DRAWING SCALE: 1"=30'
 PLOT SCALE: 1"=1'

DRAWING CONFIDENTIAL:
 THIS DRAWING AND ALL INFORMATION CONTAINED THEREON IS AND SHALL BE THE PROPERTY OF AL ANDREANSKY, P.E. ANY REPRODUCTION OR USE OF THIS DRAWING WITHOUT THE WRITTEN CONSENT OF AL ANDREANSKY, P.E. IS STRICTLY PROHIBITED.

SCALE VERIFICATION
 THIS BAR REPRESENTS THE ORIGINAL DRAWING
 0 1'

| REVISION | DATE | DESCRIPTION | BY | APPROVED |
|----------|------|-------------|----|----------|
| | | | | |

ENGINEER OF RECORD:
 AL ANDREANSKY, P.E.
 FLA. REG. #59387

| | |
|----------------------|----------------|
| CAD FILE: 11063001S4 | SCALE: 1"=30' |
| DRAWN BY: A.A. | DATE: 05-11-06 |
| CHECKED BY: | DATE: |
| APPROVED BY: | DATE: |

AL ANDREANSKY, P.E.
 P.O. BOX 456
 PALM HARBOR, FLORIDA 34682-0456
 PHONE: (727) 460-8612 FAX: (727) 789-9565

PAVEMENT LAYOUT
 8211 SW OLD KANSAS AVENUE
 STUART, FLORIDA 34997

PROJECT NO.
 11063001.001
 SHEET
 S4 of 4