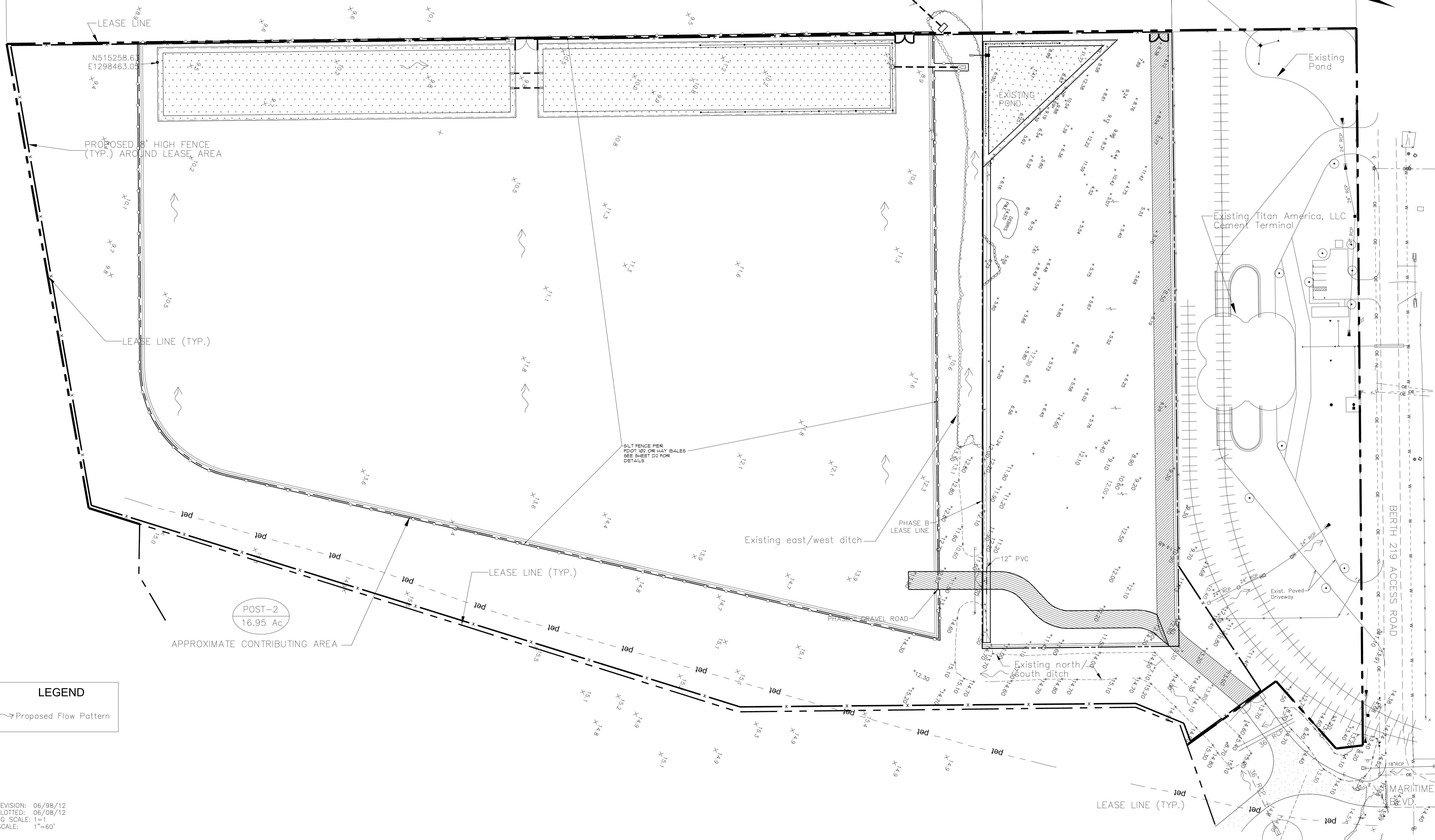


PHASE II
ERP 29-0266058-001

EXIST. PHASE I
ERP 29-0266058-001

EXISTING
ERP 29-0207113-001
EXISTING CEMENT TERMINAL



LEASE LINE

N515258.6
E1298463.0

PROPOSED 8' HIGH FENCE
(TYP.) AROUND LEASE AREA

LEASE LINE (TYP.)

POST-2
16.95 Ac
APPROXIMATE CONTRIBUTING AREA

LEASE LINE (TYP.)

6 FT FENCE PER
FOOT 102 OR HAY BALES
SEE SHEET 02 FOR
DETAILS

Existing east/west ditch

PHASE II GRAVEL ROAD

Existing north
south ditch

Existing Titan America, LLC
Cement Terminal

Existing Pond

BERTH 219 ACCESS ROAD

MARITIME
BLVD

LEGEND
~ Proposed Flow Pattern

LAST REVISION: 06/98/12
LAST PLOTTED: 06/08/12
DRAWING SCALE: 1"=1'
PLOT SCALE: 1"=60'

SCALE VERIFICATION
THIS BAR REPRESENTS
ONE INCH ON THE
ORIGINAL DRAWING
0 1"
USE TO VERIFY FIGURE

REVISION	DATE	DESCRIPTION	BY	APPROVED

ENGINEER OF RECORD:

AL ANDREANSKY, P.E.
FLA. REG. #39387

CAD FILE: 11082901L
DRAWN BY: A.A.
CHECKED BY:
APPROVED BY:

SCALE: 1"=60'
DATE: 10-14-11
DATE:
DATE:

AL ANDREANSKY, P.E.
P.O. BOX 456
PALM HARBOR, FLORIDA 34682-0456
PHONE: (727) 460-8612, FAX: (727) 789-9565

PHASE II EROSION CONTROL LAYOUT
MARITIME BLVD
TAMPA, FLORIDA

PROJECT No.
11082901.001
SHEET
E2 of 2

TITAN-TAMPA AGGREGATE UNLOADING FACILITY, TITAN AMERICA, DEERFIELD BEACH, FLORIDA