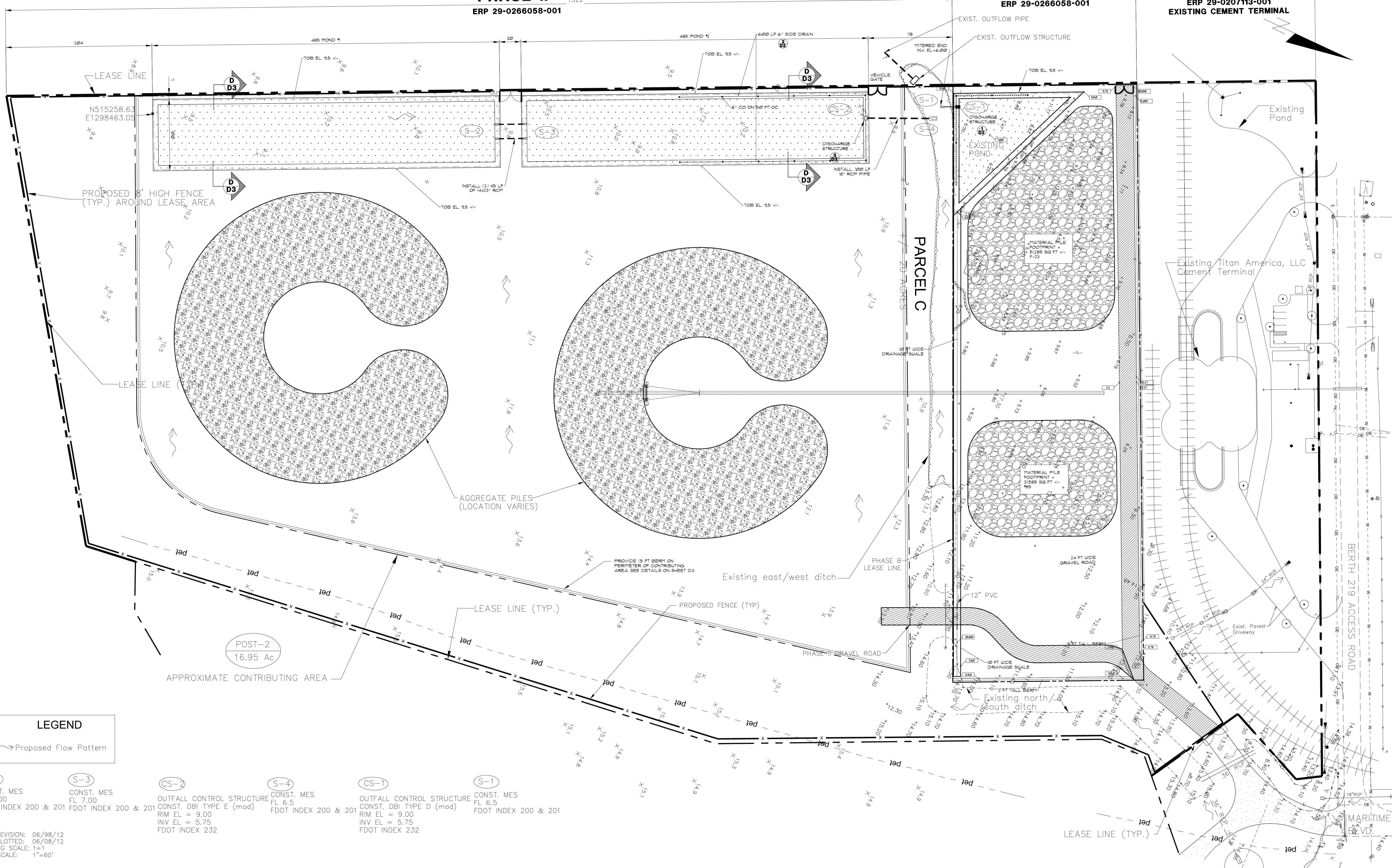


PHASE II
ERP 29-0266058-001

EXIST. PHASE I
ERP 29-0266058-001

EXISTING
ERP 29-0207113-001
EXISTING CEMENT TERMINAL



LEGEND
~ Proposed Flow Pattern

- (S-2) CONST. MES FL 7.00 FDOT INDEX 200 & 201
- (S-3) CONST. MES FL 7.00 FDOT INDEX 200 & 201
- (CS-2) OUTFALL CONTROL STRUCTURE CONST. DBI TYPE E (mod) RIM EL = 9.00 INV EL = 5.75 FDOT INDEX 232
- (S-4) CONST. MES FL 6.5 FDOT INDEX 200 & 201
- (CS-1) OUTFALL CONTROL STRUCTURE CONST. DBI TYPE D (mod) RIM EL = 9.00 INV EL = 5.75 FDOT INDEX 232
- (S-1) CONST. MES FL 6.5 FDOT INDEX 200 & 201

LAST REVISION: 06/98/12
LAST PLOTTED: 06/08/12
DRAWING SCALE: 1"=1'
PLOT SCALE: 1"=60'

DRAWING CONFIDENTIAL: THIS DRAWING AND ALL INFORMATION CONTAINED THEREON IS AND SHALL REMAIN THE PROPERTY OF A. ANDREANSKY, P.E., AS AN INSTRUMENT OF PROFESSIONAL SERVICE. THIS INFORMATION SHALL NOT BE USED WITHOUT THE FULL KNOWLEDGE AND PRIOR WRITTEN CONSENT OF AL ANDREANSKY, P.E.

SCALE VERIFICATION
THIS BAR REPRESENTS ONE INCH ON THE ORIGINAL DRAWING
0 1"
USE TO VERIFY FIGURE

REVISION	DATE	DESCRIPTION	BY	APPROVED

ENGINEER OF RECORD:
AL ANDREANSKY, P.E. DATE: _____
FLA. REG. #39387 SIGNED: _____

CAD FILE: 11082901L SCALE: 1"=60'
DRAWN BY: A.A. DATE: 10-14-11
CHECKED BY: DATE: _____
APPROVED BY: DATE: _____

AL ANDREANSKY, P.E.
P.O. BOX 456
PALM HARBOR, FLORIDA 34682-0456
PHONE: (727) 460-8612, FAX: (727) 789-9565

PHASE II LAYOUT
MARITIME BLVD
TAMPA, FLORIDA

PROJECT No. 11082901.001
SHEET 53 of 3

TITAN-TAMPA AGGREGATE UNLOADING FACILITY, TITAN AMERICA, DEERFIELD BEACH, FLORIDA